

Custom Scratch Off Cards



Fully customized with your design or artwork we produce for you. Choose from our 2 product lines.



Standard = Full Color Both Side, 100# Cover Stock. (Optional UV laminate .05¢ per piece)

Economy = Full Color Front / Black Back on 100# Cover Stock.



Images not to actual size.



Rate Card for Scratch Off and Peel & Win™ Products

*Pricing includes a **FREE Random mix of cards.** Add **\$25.00** for jobs packaged by version.*

2" x 3.5"	Standard • Full Color Front & Back		Economy • Full Color Front & Black on Back	
QUANTITY	TOTAL	PER PIECE	TOTAL	PER PIECE
250	\$222	\$0.888	\$189	\$0.756
500	\$395	\$0.790	\$336	\$0.672
1,000	\$495	\$0.495	\$421	\$0.421
2,500	\$695	\$0.278	\$519	\$0.208
5,000	\$895	\$0.179	\$761	\$0.152
10,000	\$1,095	\$0.110	\$931	\$0.093
15,000	\$1,295	\$0.086	\$1,101	\$0.073
20,000	\$1,495	\$0.075	\$1,271	\$0.064
25,000	\$1,695	\$0.068	\$1,441	\$0.058
30,000	\$1,795	\$0.060	\$1,526	\$0.051

3" x 5"	Standard • Full Color Front & Back		Economy • Full Color Front & Black on Back	
QUANTITY	TOTAL	PER PIECE	TOTAL	PER PIECE
250	\$247	\$0.988	\$210	\$0.840
500	\$445	\$0.890	\$378	\$0.756
1,000	\$545	\$0.545	\$463	\$0.463
2,500	\$745	\$0.298	\$633	\$0.253
5,000	\$945	\$0.189	\$803	\$0.161
10,000	\$1,145	\$0.115	\$973	\$0.097
15,000	\$1,345	\$0.090	\$1,143	\$0.076
20,000	\$1,545	\$0.077	\$1,313	\$0.066
25,000	\$1,745	\$0.070	\$1,483	\$0.059
30,000	\$1,945	\$0.065	\$1,653	\$0.055

Standard = Full Color Both Side, 100# Cover Stock. (Optional UV laminate .05¢ per piece)

Economy = Full Color Front / Black Back on 100# Cover Stock.

Above rates do not include shipping, design fees or special packaging. One Standard Scratch Off area on each card. Non standard sizes or multiple areas must be custom quoted. Turnaround time is 7-10 business days from receipt of payment and proof approval. This does not include shipping time. Rush jobs available, call for details! From 250-10,000,000 We can PRINT IT!

Rate Card for Scratch Off and Peel & Win™ Products

*Pricing includes a **FREE Random mix** of cards. Add **\$25.00** for jobs packaged by version.*

4.25" x 6"	Standard • Full Color Front & Back		Economy • Full Color Front & Black on Back	
QUANTITY	TOTAL	PER PIECE	TOTAL	PER PIECE
250	\$262	\$1.048	\$223	\$0.892
500	\$475	\$0.950	\$404	\$0.808
1,000	\$575	\$0.575	\$489	\$0.489
2,500	\$775	\$0.310	\$659	\$0.264
5,000	\$988	\$0.198	\$840	\$0.168
10,000	\$1,160	\$0.116	\$986	\$0.099
15,000	\$1,568	\$0.105	\$1,333	\$0.089
20,000	\$1,928	\$0.096	\$1,639	\$0.082
25,000	\$2,288	\$0.082	\$1,945	\$0.078
30,000	\$2,648	\$0.088	\$2,251	\$0.075

6" x 8.5"	Standard • Full Color Front & Back		Economy • Full Color Front & Black on Back	
QUANTITY	TOTAL	PER PIECE	TOTAL	PER PIECE
250	\$337	\$1.348	\$286	\$1.144
500	\$625	\$1.250	\$531	\$1.062
1,000	\$825	\$0.825	\$701	\$0.701
2,500	\$1,020	\$0.408	\$867	\$0.347
5,000	\$1,356	\$0.271	\$1,153	\$0.231
10,000	\$1,486	\$0.149	\$1,263	\$0.126
15,000	\$1,640	\$0.109	\$1,394	\$0.093
20,000	\$2,000	\$0.100	\$1,700	\$0.085
25,000	\$2,360	\$0.094	\$2,006	\$0.080
30,000	\$2,720	\$0.091	\$2,312	\$0.077

Standard = Full Color Both Side, 100# Cover Stock. (Optional UV laminate .05¢ per piece)

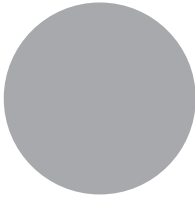
Economy = Full Color Front / Black Back on 100# Cover Stock.

Above rates do not include shipping, design fees or special packaging. One Standard Scratch Off area on each card. Non standard sizes or multiple areas must be custom quoted. Turnaround time is 7-10 business days from receipt of payment and proof approval. This does not include shipping time. Rush jobs available, call for details! From 250-10,000,000 We can PRINT IT! **Call for quotes on larger quantities!**

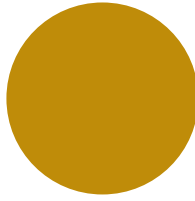
Standard Scratch Off Areas

(Custom Shapes & Sizes can be custom quoted)

1" Silver Circle



1" Gold Circle



1" VOID IF
SCRATCHED



2" x 1" Silver Rectangle



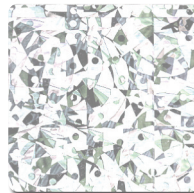
1" Silver Square



1" Gold Square



1" Holographic Square



2" x 1" Gold Rectangle



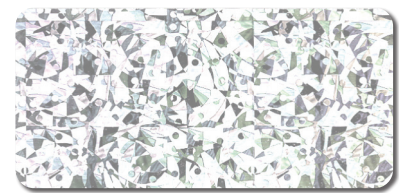
2" x 1" (3) Box Silver



2" x 1" (6) Box Silver



2" x 1" Holographic Rectangle



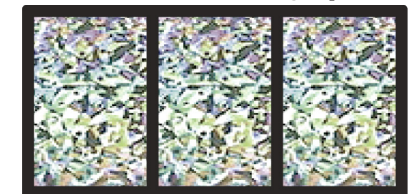
2" x 1" (3) Box Gold



2" x 1" (6) Box Gold



2" x 1" (3) Box Holographic



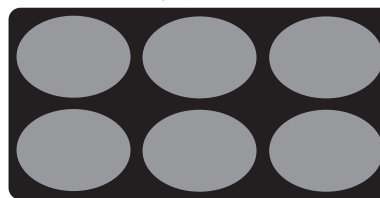
1.6535" x .315" Silver



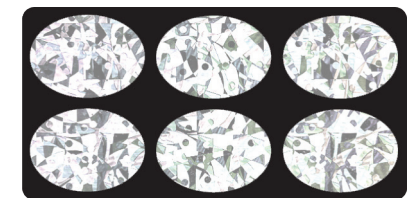
1.6535" x .315" Zebra



2" x 1" (6) Oval Silver



2" x 1" (6) Oval Holographic



2" x 1" NO PEEKING (silver)



2" x 1" NO PEEKING (gold)



Peel & Win



Peel & Reveal



No Peeking



General Art Specifications

Promo primarily works on a MAC based platform. However, we can accept PC files in PDF, EPS and TIF file formats. Please call us toll free to discuss your options or email us at **info@PromoScratchoffs.com**.

For your order to proceed smoothly, please read the following artwork specifications. If you are not a graphic designer and have hired a third party for design work, please make sure that they have a copy of this page before they begin their work.

Acceptable Media Formats:

- CD Rom - Mac
- Upload to Website
- Email art to angelica@promoprintinggroup.com

Acceptable Programs and Files:

- Adobe Photoshop Creative Suite (flattened files and saved at tif, eps or pdf)
- Adobe Illustrator Creative Suite (convert fonts to outlines, embed CMYK images and submit as eps)

Layout Specifications:

- All artwork must include a 1/8th inch bleed in all final files. (For example, a 4.25" x 6" card would be forwarded at 4.5" x 6.25", 5" x 3" cards would be sized 5.25" x 3.25". All background images, colors etc., should "bleed" or extend past the finished size for purposes of cutting.
- Do not include crop marks
- All images should be sized at 300 dots per inch (dpi) at 100%
- Keep all text, important images and scratch off areas at least 1/8" of an inch from the finished size of the card or 1/4" inch from the bleed.

Design & Submit Artwork



DESIGN YOUR ARTWORK with a Standard scratch off area such as a 1" diameter circle.



SUBMIT YOUR ARTWORK with a .835" white knockout area. We will insert your prizes and provide proofs.



DESIGN YOUR ARTWORK with a Standard scratch off area such as a 1" diameter circle.



SUBMIT YOUR ARTWORK with a .835" white knockout area. We will insert your prizes and provide proofs.



DESIGN YOUR ARTWORK with a 1.6535" x .315" scratch off



SUBMIT YOUR ARTWORK with a 1.5" X .2" knockout

Design & Submit Artwork



DESIGN YOUR ARTWORK with a Standard 2" x 1" scratch off or Peel & Win™



SUBMIT YOUR ARTWORK with a 1.835" x .835" white knockout area. We will insert your prizes and provide proofs.



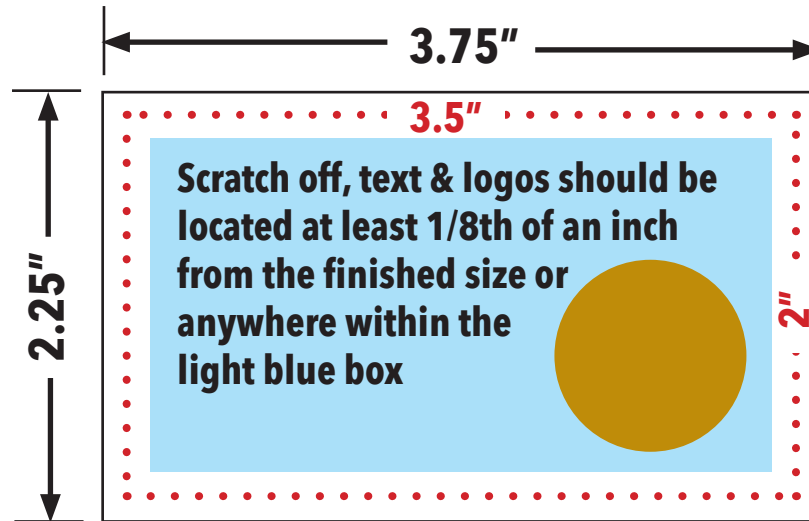
DESIGN YOUR ARTWORK with a Standard 2" x 1" (6 Box) scratch off or 2" x 1" (3 Box) scratch off



SUBMIT YOUR ARTWORK with a 1.835" x .835" white knockout area. We will insert your prizes and provide proofs.



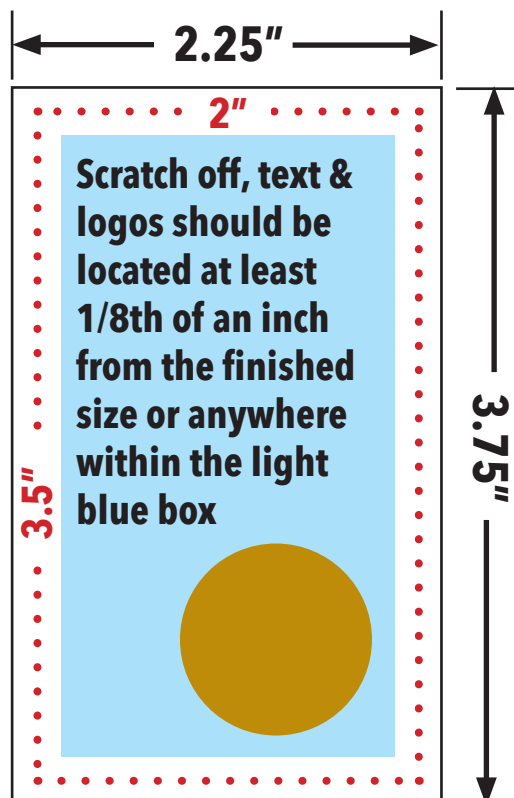
3.5" x 2" Scratch off Specifications



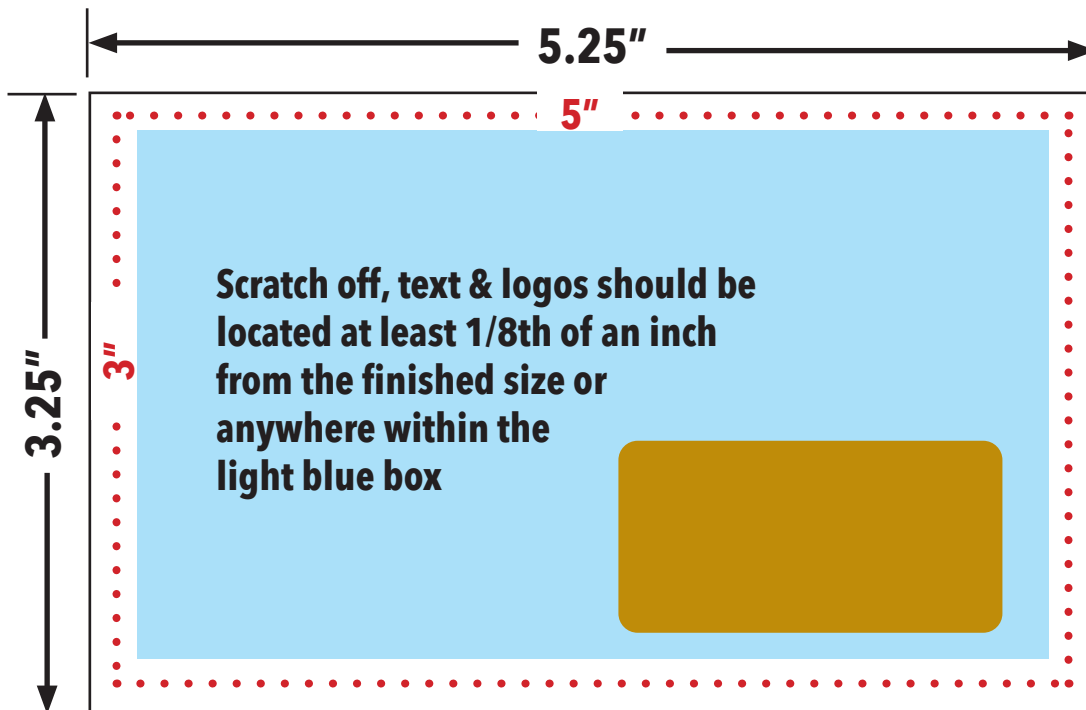
Red dotted line of 3.5" x 2" represents the cut down "finished" size of the piece.

Extend background images and colors past finished size to 3.75" x 2.25 for purposes of cutting.

This way when we "cut down" the card, there will not be any white lines around the border.



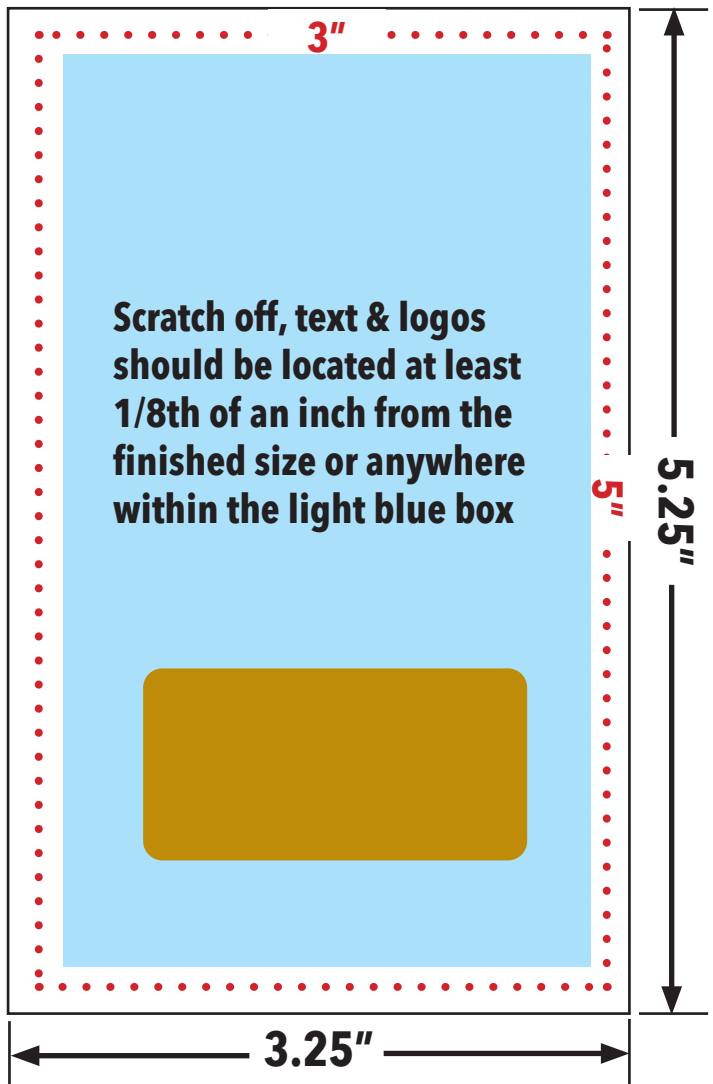
5" x 3" Scratch off Specifications



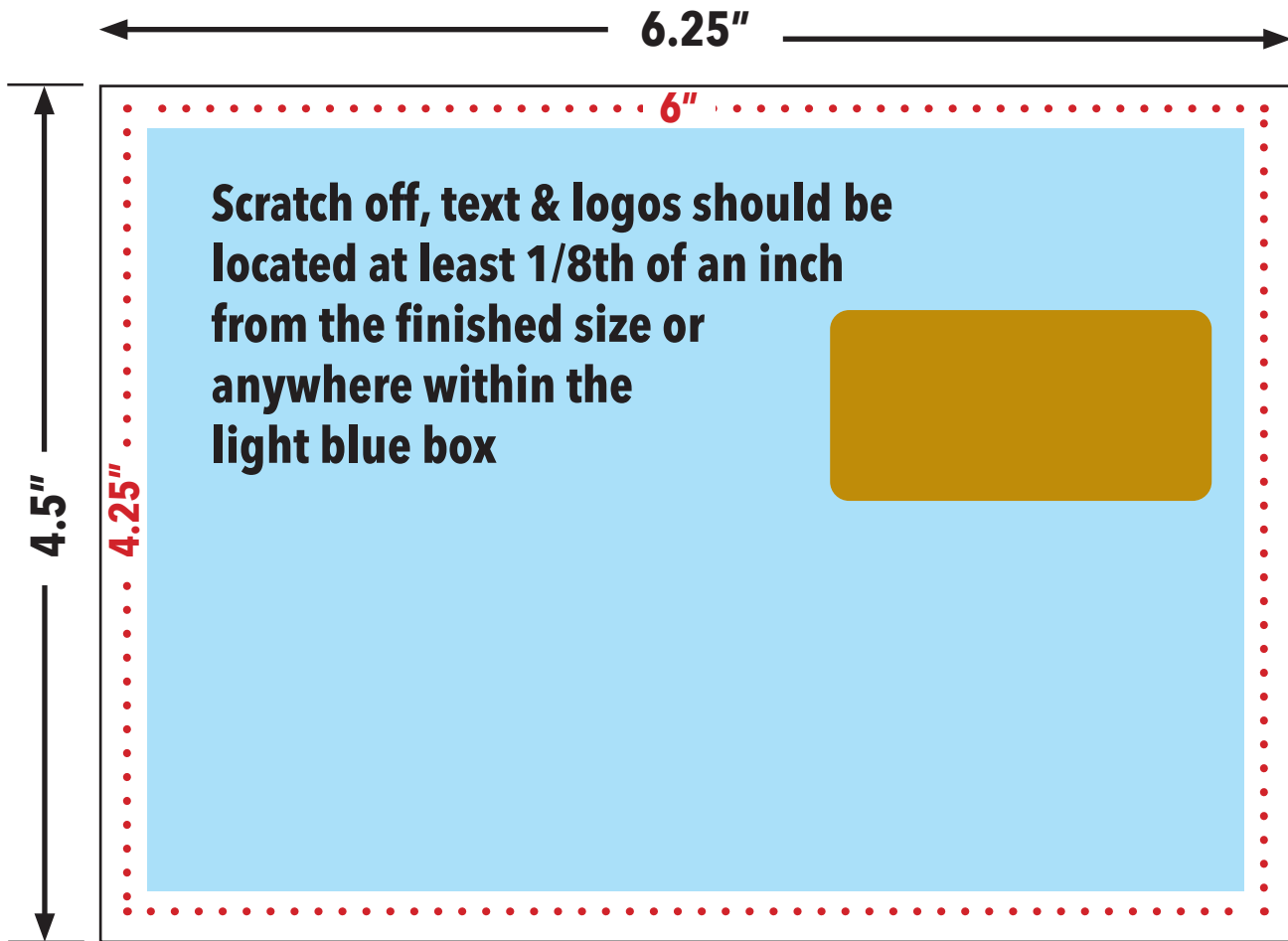
Red dotted line of 5" x 3"
represents the cut down
"finished" size of the piece.

Extend background images
and colors past finished
size to 5.25 x 3.25 for
purposes of cutting.

This way when we "cut down"
the card, there will not be any
white lines around the border.



6" x 4.25" Scratch off Specifications

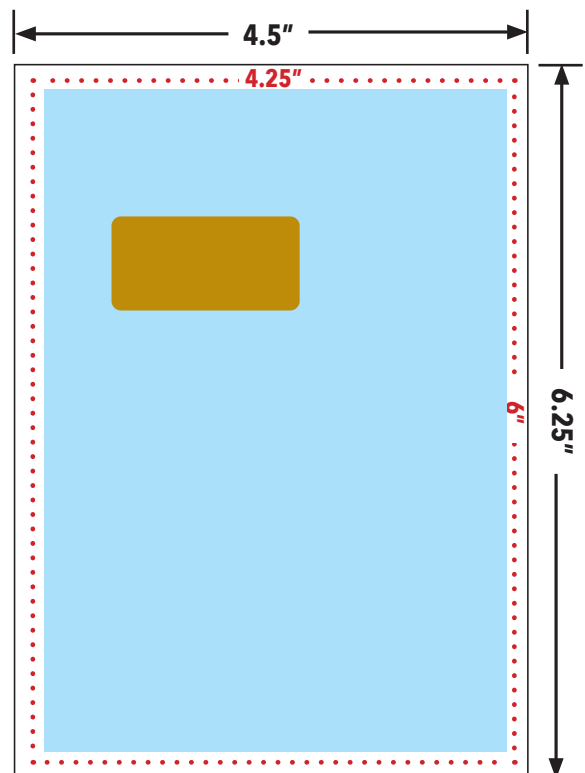


Create a document at 6.25" x 4.5"

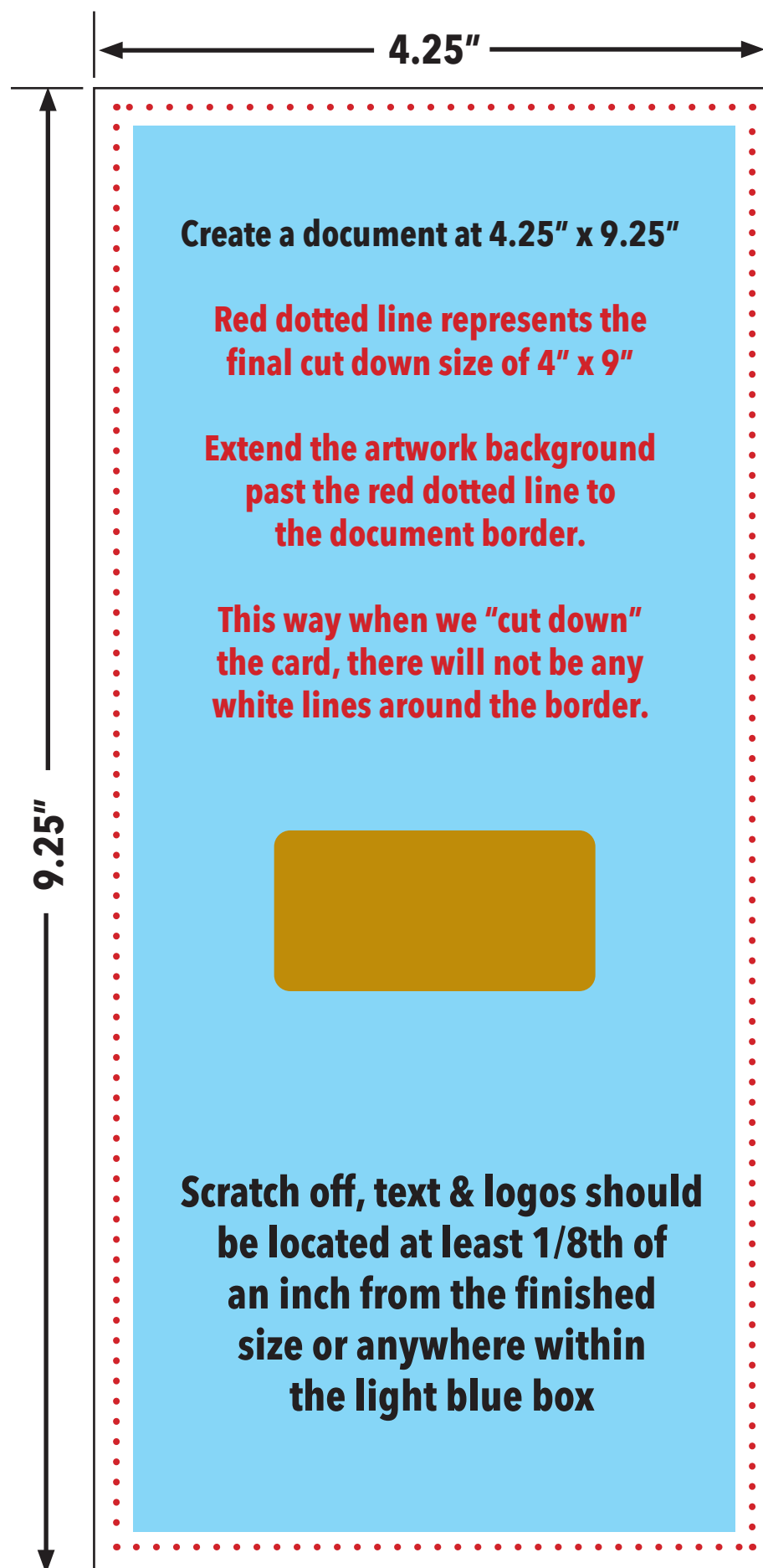
Red dotted line represents the final cut down size of 6" x 4.25"

Extend the artwork background past the red dotted line to the document border.

This way when we "cut down" the card, there will not be any white lines around the border.



4" x 9" (Rack Card) Scratch off Specifications



8.5" x 6" Scratch off Specifications

